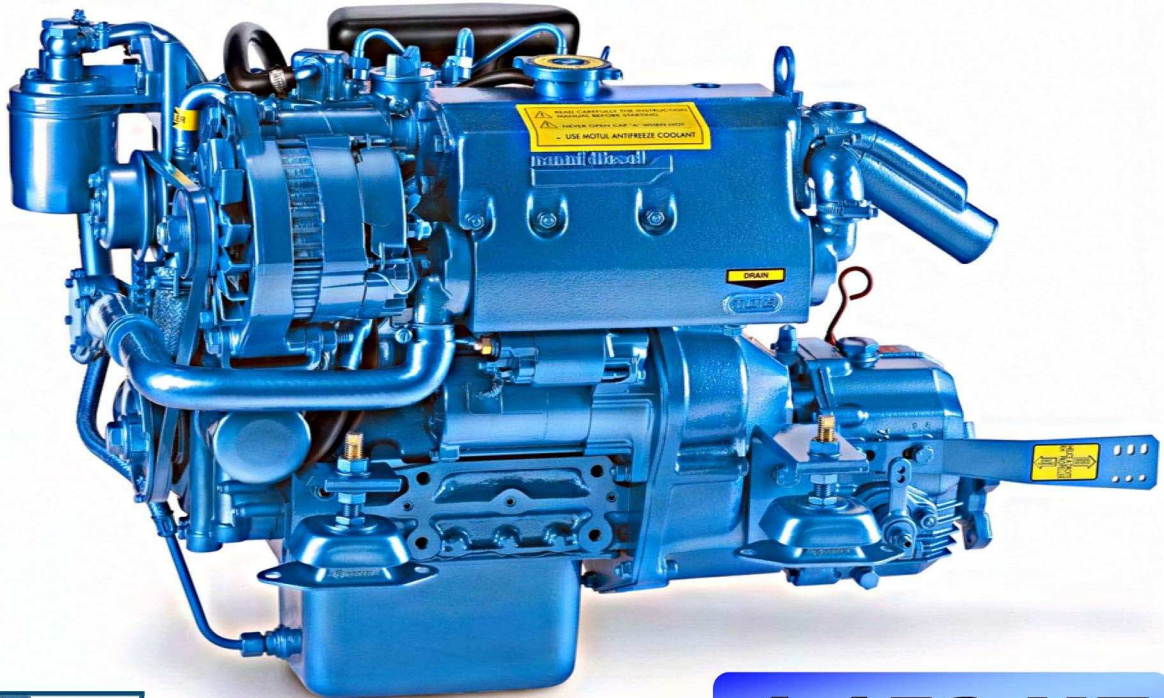


nannidiesel

energy in blue



Kubota BASE

4.150 HE

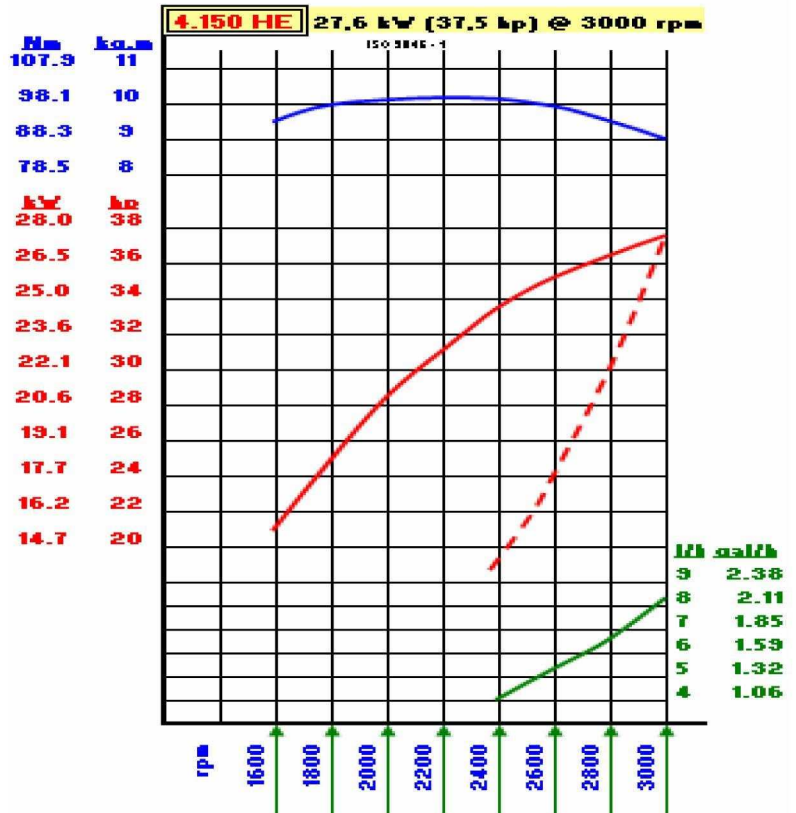
27,6 kW (37.5 hp)

Technical Specifications

Power: kW (hp)	27,6 (37,5)
Maximum RPM	3000
Displacement: ci (cc)	91.4" (1498 cc)
N° of cylinders	4 in line
Bore / Stroke: in (mm)	3.07x3.086" (78x78,4 mm)
Compression Ratio	23 / 1
Injection	Indirect (E-TVCS)
Intake	Atmospherical
Cooling System	Heath Exchanger
Alternator	12 V 100 A
Instrument Panel	A 3
Transmission	Mechanical or hydraulical
Weight (incl trans) lb (kg)	319.7 lb (145 kg)

Hose Diameters

Exhaust: in (mm)	2.4" (60 mm)
Fuel: in (mm)	0.315" (8 mm)
Sea Water: in (mm)	1" (25 mm)
Engine Max Install. Angle	15°



NANNI DIESEL recommends

